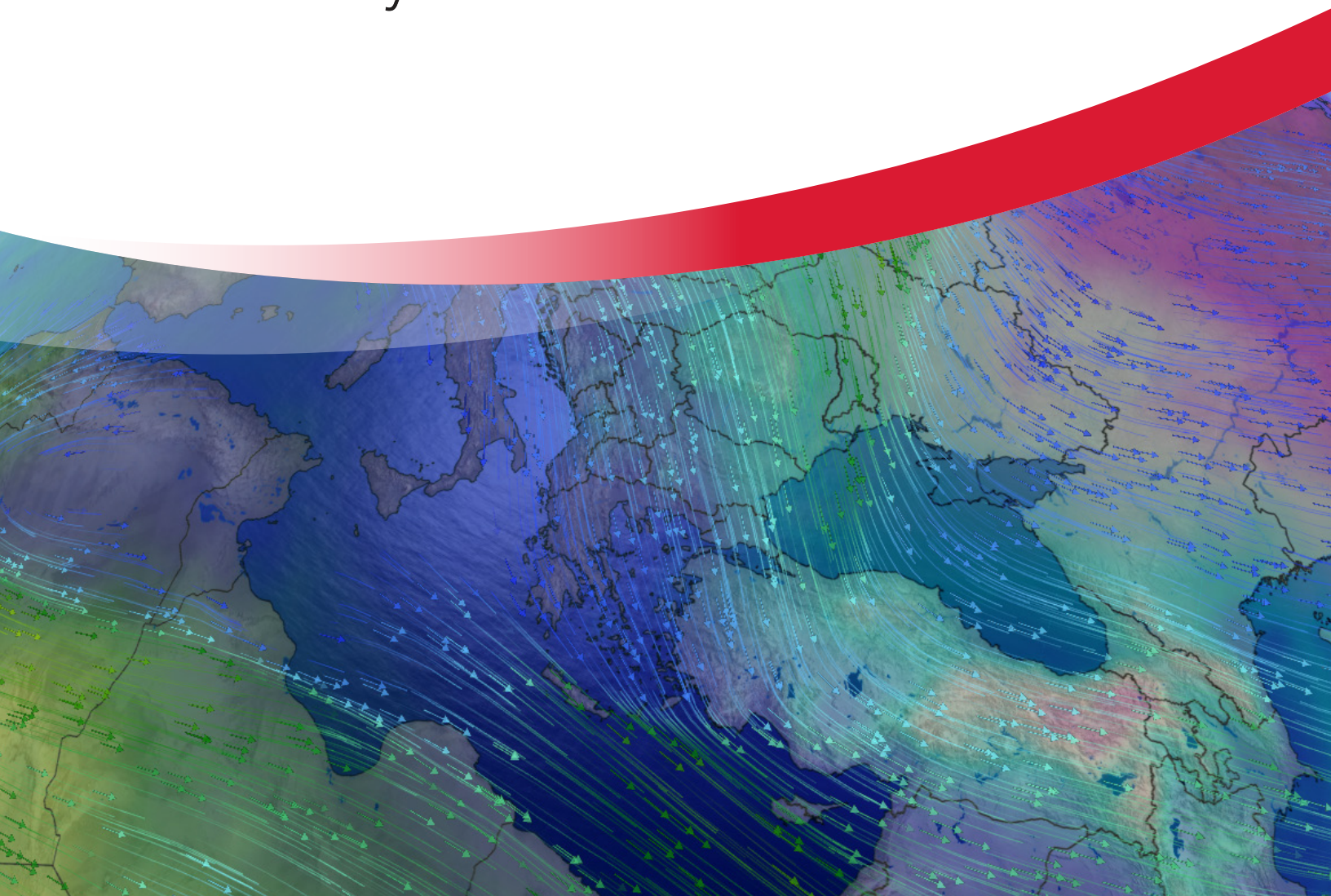


Scientific **Weather** **Visualization**

BARON Lynx™



One Solution for **All** Your Weather Needs

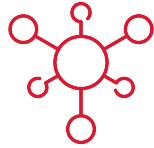


Eliminate the need for multiple systems to view all your weather data with **Baron Lynx**.

A complete end-to-end weather solution, Lynx can seamlessly integrate data from your entire meteorological network into one customizable workstation, where forecasters can view and analyze all weather data at the same time and distribute critical weather information.

Communicating alerts, warnings and everyday weather information within your organization or to the public is simple with the ability to post to social media, websites and apps directly from the Lynx interface. Deliver more engaging information and increase the visibility of your organization with captivating weather graphics and videos generated in Lynx.

Transform into a more efficient, accurate and effective meteorological organization, ready to perform at the highest level with Baron Lynx when it matters most.



Integrate

Integrate all your meteorological network data into one system where it can be observed, analyzed and distributed.



Predict

Generate accurate forecasts that match your local knowledge with editable weather prediction models.



Distribute

Share dynamic and effective information with graphics and videos on social media, websites, and within apps.



Analyze

Analyze real-time weather data down to the street level with high-resolution imagery.



Warn

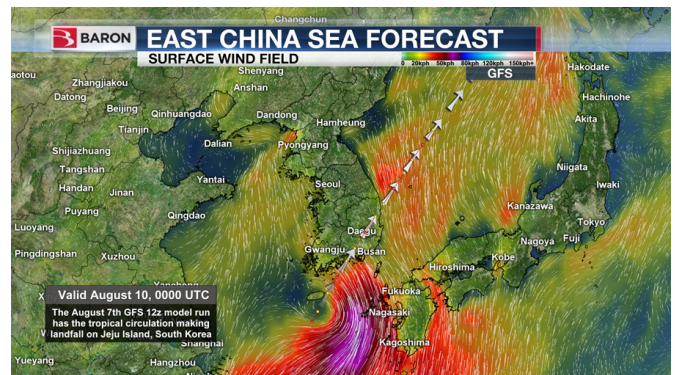
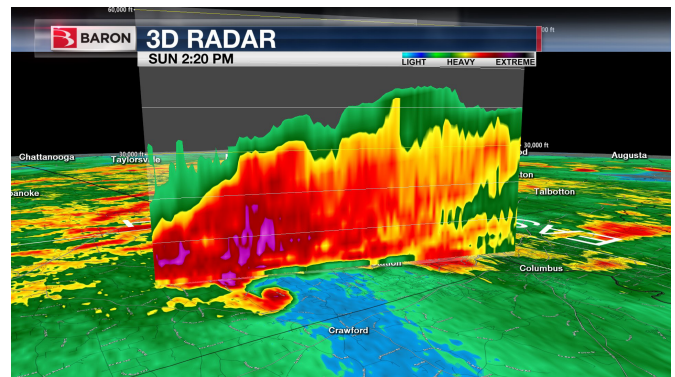
Warn your citizens with automated alerting and push notification technology.

INTEGRATE

Advanced Workstation for the Forecaster

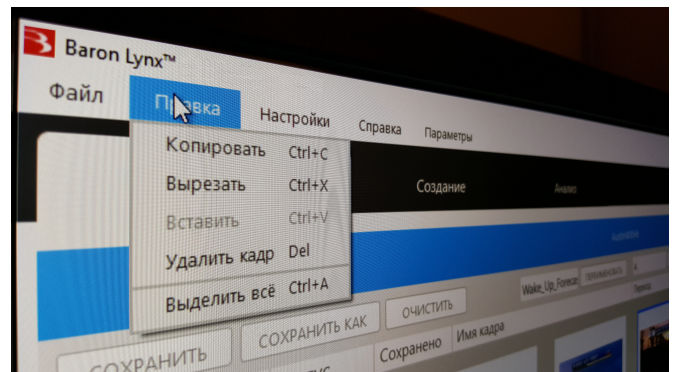
Data Integration

With Baron Lynx your entire meteorological network, including data from radars, weather sensors, satellites, weather models and more, are integrated into a single source. Forecasters can view and analyze the most current data from different sources simultaneously without switching systems. Even more comprehensive situational awareness is made possible with live IP cameras from around the world, giving users the ability to visualize actual conditions on the ground. With local, regional and worldwide data available, Baron Lynx is truly a global weather system.

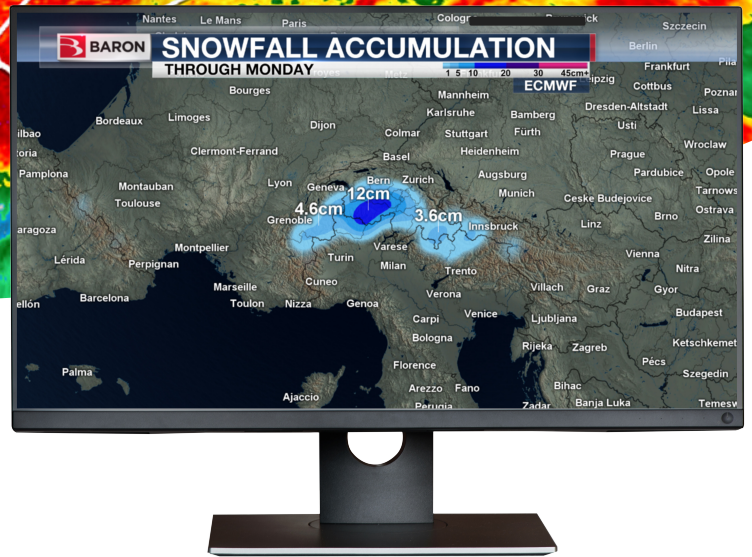
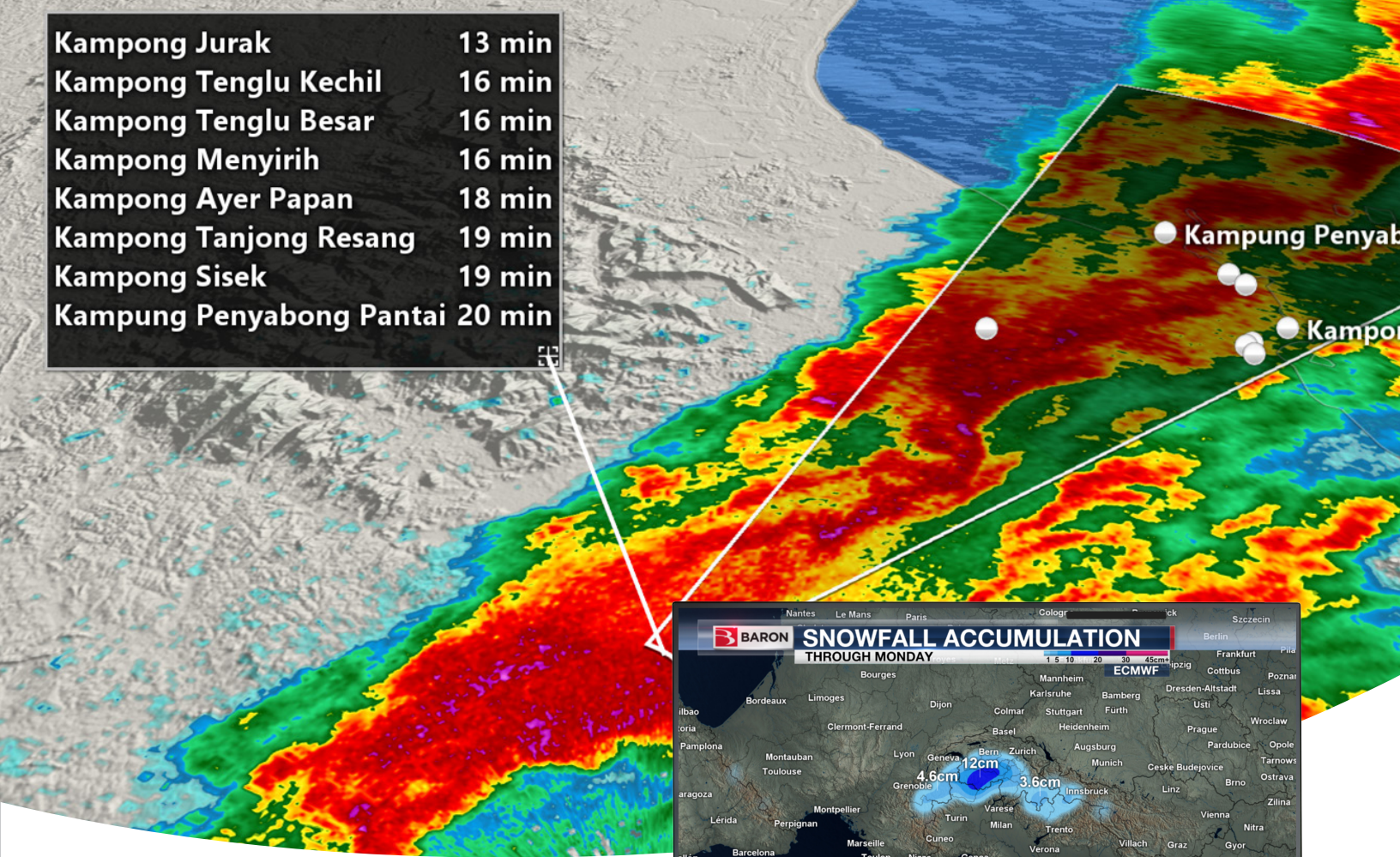


Flexible Interface in Your Language

Baron Lynx was designed to be user friendly. The interface is available in any language and is customizable so the map views and data products that best fit into your workflow are never more than a click away. Custom preset workspaces can be created and saved for specific weather scenarios.



Kampung Jurak	13 min
Kampung Tenglu Kecil	16 min
Kampung Tenglu Besar	16 min
Kampung Menyirih	16 min
Kampung Ayer Papan	18 min
Kampung Tanjong Resang	19 min
Kampung Sisek	19 min
Kampung Penyabong Pantai	20 min

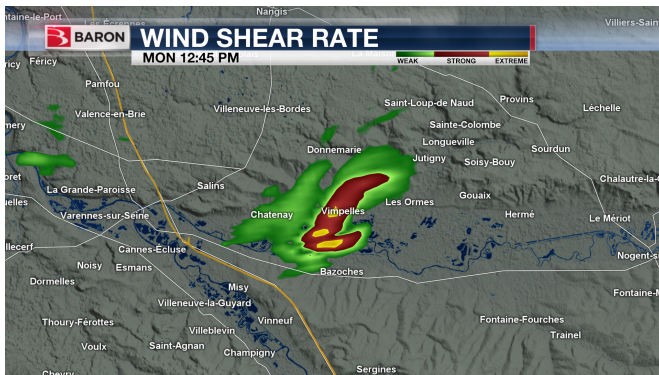
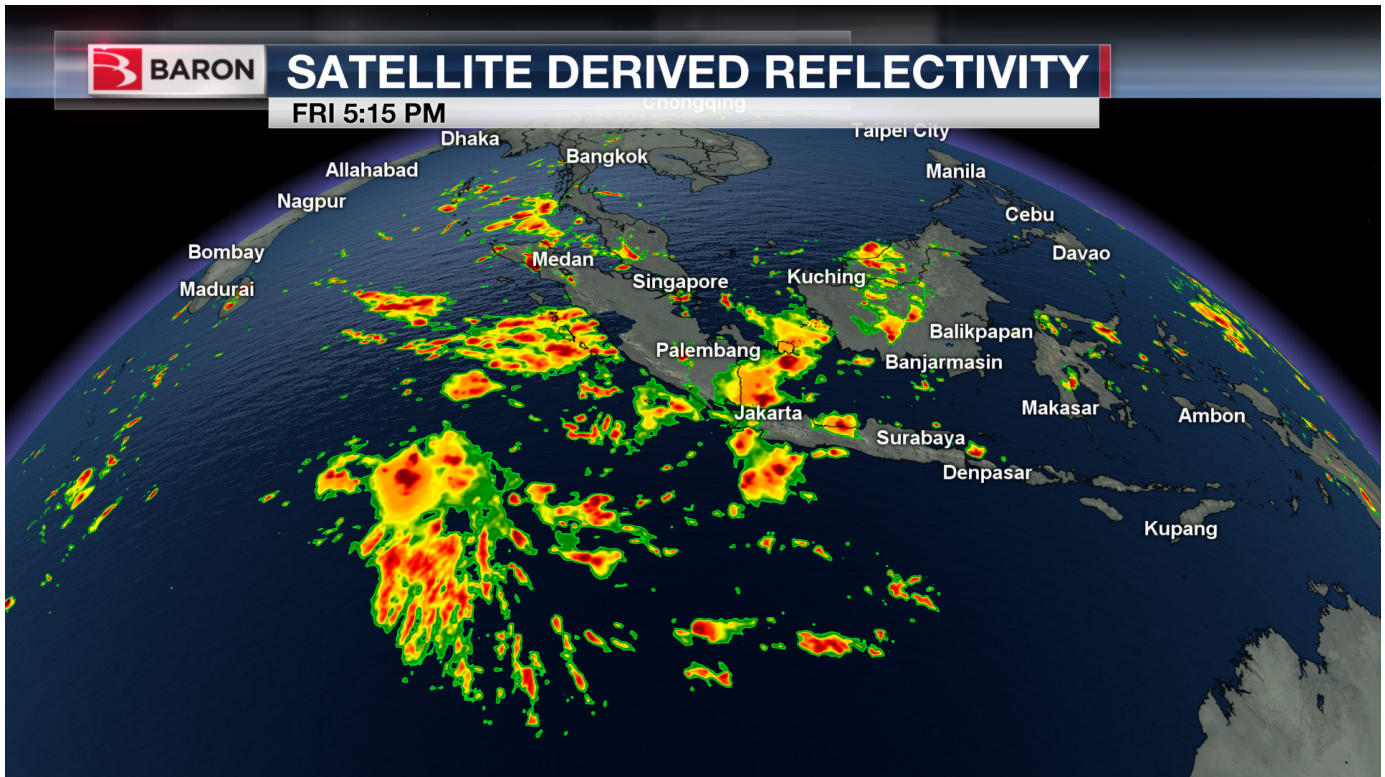


ANALYZE | PREDICT

Scientific Analysis and Forecasting

By providing a wealth of real-time radar and other meteorological data, Baron Lynx is a powerful weather analysis tool. Precision pathcasting enables the user to easily determine the properties of a storm, so they can communicate its severity and time of arrival for local communities. Specialized data for convective weather, flooding, winter weather, tropical environments and more are all available in the Baron Lynx system.

Baron offers multiple weather models, including hydrological and air quality models, that enable more accurate and in-depth forecasts with actionable information. Numerical weather prediction models are fully editable, allowing forecasters to make manual adjustments to create a forecast that matches their observations and knowledge.



Visualization

Get a clear, comprehensive picture of weather conditions with Baron Lynx scientific imagery. Analyze data down to the street level and pinpoint the local impact of a storm with high-resolution displays. Baron Lynx volumetric imaging technology offers a 3D look inside a storm. Lynx offers a wealth of mapping options, including 3D terrain, so you can customize the view to your needs.

Automated Workflows for Increased Efficiency

Automated functionality in Baron Lynx will reduce staff workload, resulting in a more efficient operation. Current data automatically populates, allowing forecasters to start analyzing and distributing data as soon as they launch the system without having to make any manual edits. Sophisticated Baron post-processing algorithms cue the user to a variety of weather-related threats, including potential tornadic activity, dangerous road conditions and more.



ICY BRIDGES
Temperature drops below freezing, exposing road surfaces to cold air above, leading to ice before road

Road Temperature

Air Temperature: 26°F

Bridge Temperature: 26°F



DISTRIBUTE | WARN

Reach Your Audience

| Warnings

Fast and effective communication is vital when dangerous weather strikes in your region. With Baron's patented alerting technology, you can set up automated alerts that will reach the public via text message, push notification and email. Our push notification technology allows for tailored alert messages based on a person's location.

| Graphics and Videos

Generate visuals that will engage your target audience. The unrivaled graphic capabilities in Lynx result in images that clearly communicate current and forecasted conditions. Using a webcam, your staff can produce weather analysis videos and forecasts for distribution.

Popular Cities	Today	Saturday	Sunday
Pretoria	29° 11°	27° 10°	26° 11°
Johannesburg	26° 9°	25° 9°	24° 10°
Cape Town	19° 12°	14° 12°	18° 11°
Durban	23° 15°	25° 16°	22° 16°
Bloemfontein	26° 3°	27° 9°	28° 9°
Polokwane	25° 10°	22° 10°	23° 8°
Upington	33° 18°	26° 15°	27° 10°

⚠ Weather Alerts	
Damaging Winds	Magareng / Warrenton
2020/09/02 9:24:00 AM to 2020/09/05 10:00:00 PM	
Gale to strong gale force north-westerly interior winds (65-80km/h) are expected over the southern parts of Namakwa District on Wednesday, and strong damaging winds are possible in places over eastern Northern Cape today and in the extreme east today (02/09/2020).	
Advisory	
Damaging Winds	Sol Plaatjie / Kimberley
2020/09/02 9:24:00 AM to 2020/09/05 10:00:00 PM	
Gale to strong gale force north-westerly interior winds (65-80km/h) are expected over the southern parts of Namakwa District on Wednesday, and strong damaging winds are possible in places over eastern Northern Cape today and in the extreme east today (02/09/2020).	
Advisory	

Social Media

More than half the world's population is now on social media, and with Baron Lynx reaching them with weather information is easier than ever. Posts that include videos and graphics produced in Lynx can be published to your organization's Facebook and Twitter accounts directly from Lynx.

Websites and Apps

Communicating online and via mobile devices is easy. Your websites and apps can be automatically and continuously populated with the latest radar imagery and forecasts with no intervention required on the part of the user.

Visibility for Your Organization

All the weather information you distribute through Baron Lynx will be under the banner of your organization. The important role your organization plays in saving lives and protecting property in critical weather situations will be on full display.



Focused on Your **Success.**

We are focused on our customers, providing the science, analysis and tools that help keep your public informed and safe, while making sure your investment continues to perform.

The Baron operations center is staffed 24/7/365, monitoring systems and resolving any issues.

If you have a Baron display or radar, with your permission, we can remotely dial into the system for maintenance and troubleshooting. You can be assured of continuous weather intelligence and systems performance, especially when it matters most.



baronweather.com

solutions@baronweather.com | +1 (256) 881-8811

©2022 Baron Weather, Inc. All rights reserved. Baron, the Baron logo, Baron Lynx and Baron Threat Net are registered trademarks of Baron Weather, Inc. Other trademarks are property of their respective owners. 07/2022

